



We know the rolls you need!

Does your business need
Rolling Mill Rolls?
CONTACT US



Shree Gautam Rolls

AN ISO 9001:2015 Certified Company

Works Address:

Madhevi Road, Backside Kaler Fuel Station, Malerkotla - 148023, Punjab, India

Mobile No.: +91-99140-37677, 98140-07677

Email: rolls.gautam94@gmail.com

Website: www.shreegautamrolls.com

coltprints - 95690-61234



Shree Gautam Rolls

AN ISO 9001 : 2015 Certified Company

Manufacturer & Exporter of

All Type of ROLLS FOR **HOT IRON & STEEL ROLLING & RE ROLLING MILLS**



**First Choice of Every
Hot Iron & Steel
Rolling & Re Rolling Mills**





The Director's Desk

अयं बन्धुरयनेति गणना लघुचेतसाम्
उदारचरितानां तु वसुधैव कुटुम्बकम्

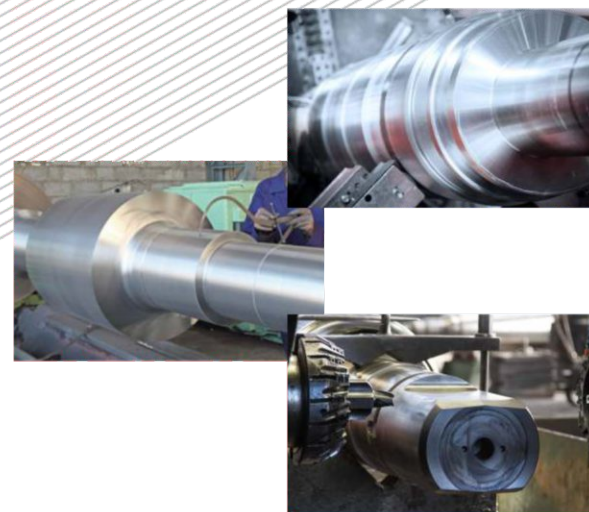
The distinction "This person is mine, and this one is not" is made only by those who are not aware of the truth. For those of noble conduct the whole world is one family.

"The steel industry is the foundation industry of any economy especially in developing countries which are aiming to significantly increase investment in the future for infrastructure and growth of the manufacturing sector"

Shree Gautam Rolls installed its first facility in 1994, with hard work and honesty I have seen our company grow by leaps and bounds. Due to culmination of industry experience with our rich values and comprehensive quality control initiatives, we are competent in integrating the modern manufacturing techniques with our working setups and therefore provide quality rolls for hot iron & steel rolling & re rolling mills. We have zeal to excel & thrive on challenges and we constantly endeavour to expand our horizons by encouraging new ideas & initiatives within our passionate workforce. "Nothing works better than just improving your products" Our policies are in full conformity with international benchmarks and our biggest asset is our untainted reputation in following ethical practices....

Mr. Suresh Jain (Director)

**Effective in Delivering
the Superlative**



Vision

To achieve complete Satisfaction of customers in products & service hence become a renowned companies in individual field.

Mission

To provide "Quality Rolls for Hot Iron & Steel Rolling & Re Rolling Mills" to the "World of Manufacturing" for enhancing their operational efficiency.

Values

The company also provides clean, congenial and commensurate work environment to its employees thereby keeping the work force motivated and self driven to provide their best to the company and our customers.



We know the rolls you need!

Company Brief

Corporate Profile

Shree Gautam Rolls is one of the pioneers in production of mill rolls in India for various industries. Since 1994, we have always been concentrating on the research and development in production of hot iron & steel rolling & re rolling mill rolls, and make them of highest quality standards.

Shree Gautam Rolls is a customer focussed company that was founded many years back with a mission to deliver quality at reasonable rates and with an aim to become a market leader of Industrial Rolls in the national and international market. We are settled in Malerkotla (Punjab, India) and specialize in producing Spun Cast Rolls, Forged Rolls, Metal Sleeve, and many other products. Each of our product is of unmatched quality which also contributes in making our company worth trusting. The complete range is made with care by our professionals, who make every possible effort to improvise the quality of the offered variety. Also, these employees strive hard to accomplish organizational objectives efficiently and fetch effective results for the company. By successfully meeting customer's demands, we have earned much reputation in the global market.

The centrifugal casting process can produce components with intricate geometries at a lower cost and with reduced machining requirements in comparison to other commonly used casting methods. The molding dies can be oriented horizontally (horizontal centrifugal casting) or vertically (vertical centrifugal casting).

As quality is becoming a decisive factor in the face of ever-harsher competition in national and international markets our market success is closely liked with our un compromised quality approach which have adopted high-end norms of roll making connected to our goal of meeting the constantly increasing quality requirements of our customers resulting our utterly satisfied customers from decades and this comes not only from quality approach & system, but it comes also from attitude and ethics which transmit our core values of credibility, commitment, agility, team spirit, honesty, integrity and excellence as our corporate culture, we are still committed to our customers for best values, low cost yet high quality product and services.

INNOVATION
BEYOND IMAGINATION



Success is a Journey,
not a Destination

JOURNEY TO EXCELLENCE

Excellence is earned through hard work and dedication to manufacture world class quality product. At Shree Gautam Rolls we live by these words everyday. Since 1994, we have been committed to provide the best rolling mill solutions to domestic & international markets. This ongoing commitment doesn't stop with the manufacturing process itself. We strongly believe that the real attributes of a great company are to treat every customer with utmost respect and satisfy their every need the first time and every time. This dedication has allowed us to deliver the highest quality products on a timely basis and at a fair price. This journey doesn't end here, we will continue to search for a new ways to improve, to deliver higher quality products to our reputed valued customers and most importantly, maintain the highest ethics in our pursuit of Excellence.



In House Manufacturing Facilities

Manufacturing rolls requires many different technologies, some that we have developed ourselves, and others that are already available in the marketplace. Our foundries, steel plant, forging, machine, and heat treatment shops, are capable of manufacturing a wide range of rolls. Bench marking between our plants enables us to establish best practices and ensures that knowledge exchange is efficiently spread throughout the company. We are proud to say that we have an ultra-modern manufacturing facility assuring high quality Rolls.

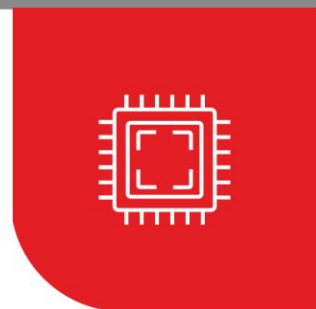


Our Team

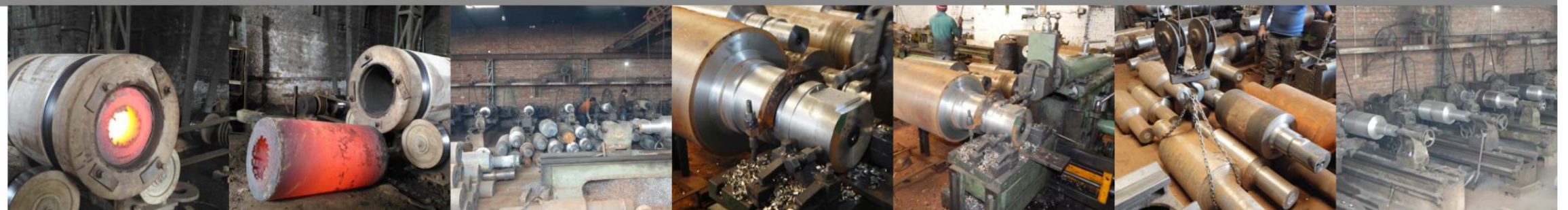
For any Manufacturing unit, the workers, operators, technicians, supervisors, engineers and other helping hands are the integral parts, along with the management, managers and staff in Marketing and Sales.

At Shree Gautam Rolls, we have well qualified professionals and experienced think-heads, who have been instrumental in delivering quality, accurate and consistent results. Each individual of our work force is empowered with up to date knowledge and technical expertise that makes them fabricate our production to the perfection of quality norms and standard adherence.

Together Everyone Achieve More!



Core Infrastructure



Steel Melting Shop

- 1 Nos. Induction Furnace (Capacity 8 Ton)
- 1 Nos. Induction Furnace (Capacity 3 Ton)
- 6 Nos. Ladle with argon purging system of different capacity
- Ladle preheating system
- Immersion Pyrometer for Liquid Metal's temperature measurement

Steel Casting Division

- 2 Nos. Overhead Cranes of different capacity for different foundry operations
- Moulding Boxes of different sizes
- Pneumatic Hammers, chippers and grinders for mould ramming and cleaning of castings
- Sand Muller - 4 Nos. for Sand preparation
- Mould Oven- 3 Nos.
- Mould Dryer-5 Nos.

Machine Shop

- 10 Nos. Heavy Duty Rough Turning Lathes in different sizes starting from 14' to 24'
- 05 Nos. Heavy Duty Finishing Lathes in different sizes starting from 12' to 20'
- 02 Nos. Roll Grinding Machine with Taper & Cambering attachments
- 01 Nos. Horizontal and floor Boring Machines
- 04 Nos. Wobbler Milling Machines
- 02 Nos. 1.3 Meter VTL

Heat Treatment Shop

- 02 Nos. 50 Tons Single Batch Heat Treatment Furnace (4 M x 6 M x 4 M)
- 01 Nos. 30 Tons Single Batch Heat Treatment Furnace (3 M x 5 M x 3 M)



Quality Accreditations

AN ISO 9001:2015 Certified Company

We at Shree Gautam Rolls believe in long and mutually profitable connection thereby we take care of all the control procedures ranging from Roll quality through chemical analysis, hardness testing, ultrasonic testing and dimension control. Our company is equipped with all the necessary tools and instruments that are used to control quality of each and every product coming out of Shree Gautam Rolls.

Quality is the lifeline of Shree Gautam Rolls hence, it is guaranteed that only quality assured Forged Rolls, Metal Sleeve, Double Poured Alloy, etc. are offered to the clients. In our company, quality starts from the order acceptance during which the professionals decide the quality plan which includes melting, moulding, casting and finishing techniques.





We know the rolls you need!

Our Product Range

CHILLED ROLLS

All Type of ROLLS FOR
HOT IRON &
STEEL ROLLING
& RE ROLLING MILLS

Chilled Rolls Barrels are manufactured by centrifugal casting method, In this casting rolls remain free from pinholes and cracks.

The steel shafts are fitted in the Barrels with shrink fitting technology along with M.S lock nuts on both sides of the barrels. This method annihilates the chances of loosening the shafts. We are specialize in manufacturing chilled rolls barrels for TMT , TOR, FLAT BARS, ROUNDS, SQUARE MILLS, Etc. Whether mill is manual, automatic or semi-automatic. Proper chemical composition will be done according to the stand nos and material which have to be produce from our rolls. order and be tension free.



We know the rolls you need!

Our Product Range

Applications of Chilled Rolls include :

- Sheet, plate and strip finishing rolling.
- Section and bar intermediate and finishing rolling.
- Wire rod intermediate and finishing rolling.
- Wire rod finishing rolling.
- Flat products rolling in Hot strip and Plate Mills.
- Hot rolling of non-ferrous sheets.

Best Rolls for
Tough Applications



Types of Chilled Rolls

ICCI Rolls

These are cast iron based rolls alloyed with Nickel, Chromium and Molybdenum having a matrix of pearlite and carbide with flake graphite. The material has very good thermal properties coupled with property of imparting good surface finish to the product.

DPIC Rolls

These Rolls are made of a high alloyed shell iron and a soft grey iron or ductile iron core metal depending on neck strength requirement. These rolls are cast both through centrifugal and static route.

Bainitic Chill Rolls

Alloy elements of Ni ~ Mn ~ Cr ~ Mo etc., are added to bainitic nodular cast iron rolls for obtaining acicular (bainite-martensite) matrix in its micro structure of these rolls. These rolls can be produced by static casting and centrifugal casting.

Shafted Chilled Rolls

The steel shafts are fitted in the Barrels with shrink fitting technology along with M.S lock nuts on both sides of the barrels. This method annihilates the chances of loosening the shafts. We also Produce Chill Rolls Barrels by centrifugal casting. In this casting rolls remain free from pinholes and cracks.

Chemical Composition

Hardness	C%	Mn%	Si%	Cr%	Ni%	Mo%	S%	P%
50-60 (ICCI)	3.00-3.20	0.60-0.90	1.10-1.50	0.80-1.20	1.50-1.80	0.25-0.35	0.06 MAX	0.15 MAX
60-70 (ICCI)	3.00-3.30	0.60-0.90	1.10-1.50	0.80-1.20	1.50-2.50	0.25-0.40	0.06 MAX	0.15 MAX
70-75 (DPIC)	3.10-3.40	0.60-0.90	0.70-1.10	1.20-1.60	2.50-4.00	0.25-0.40	0.050 MAX	0.10 MAX
75-80 (DPIC)	3.10-3.40	0.60-0.90	0.70-1.10	1.40-1.80	2.50-4.50	0.25-0.40	0.050 MAX	0.10 MAX
80-85 (DPIC)	3.20-350	0.60-0.90	0.70-1.00	1.60-1.90	4.00-4.50	0.25-0.40	0.050 MAX	0.10 MAX



We know the rolls you need!

Our Product Range

S.G. IRON ROLLS

All Type of ROLLS FOR
HOT IRON &
STEEL ROLLING
& RE ROLLING MILLS

SG Iron Rolls are made of finest grade spheroidal graphite iron or ductile iron. It is a type of iron in which graphite is found in substantial quantity. The utility of such iron rolls is wide and varied. These rolls can be used by structural item manufacturers as well as TMT bar manufacturing industry. Special properties of SG Iron Rolls make it suitable for use in cold/hot iron steel relocating mills or by the manufacturers of all kinds of structural products such as squares, general angles, flat angles, bar and other such products.

Types of S.G. Iron Rolls

**S.G. Iron
Pearlitic Rolls**

Pearlitic Spheroidal Graphite Rolls have a thick layer of cast iron with nodular graphite, the name of such roll is based on the fact that the material consists of nodular graphite and carbides in a pearlitic matrix, the softest grades have a pearlitic matrix containing ferrite around the graphite nodules, while the higher hardness grades have a complete pearlitic matrix, the carbide content increases proportionately with the hardness.

**S.G. Iron
Acicular Rolls**

Acicular Spheroidal Graphite Rolls also have a thick layer of cast iron with nodular graphite, here, the name of such roll is based on the fact that the material consists of nodular graphite and carbides in a pearlitic - bainitic matrix, the carbide content is considerably higher in the harder grades than the softer ones.



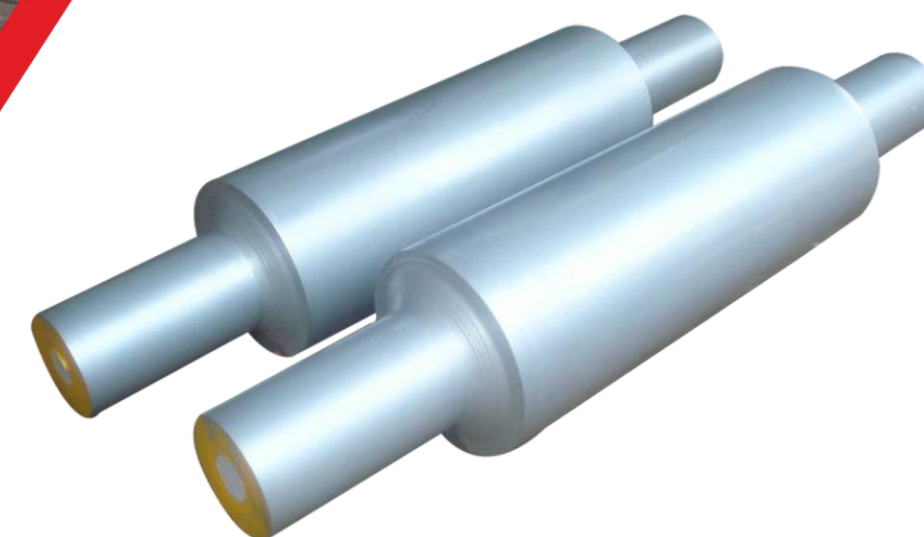
We know the rolls you need!

Our Product Range

Applications of S.G. Rolls include :

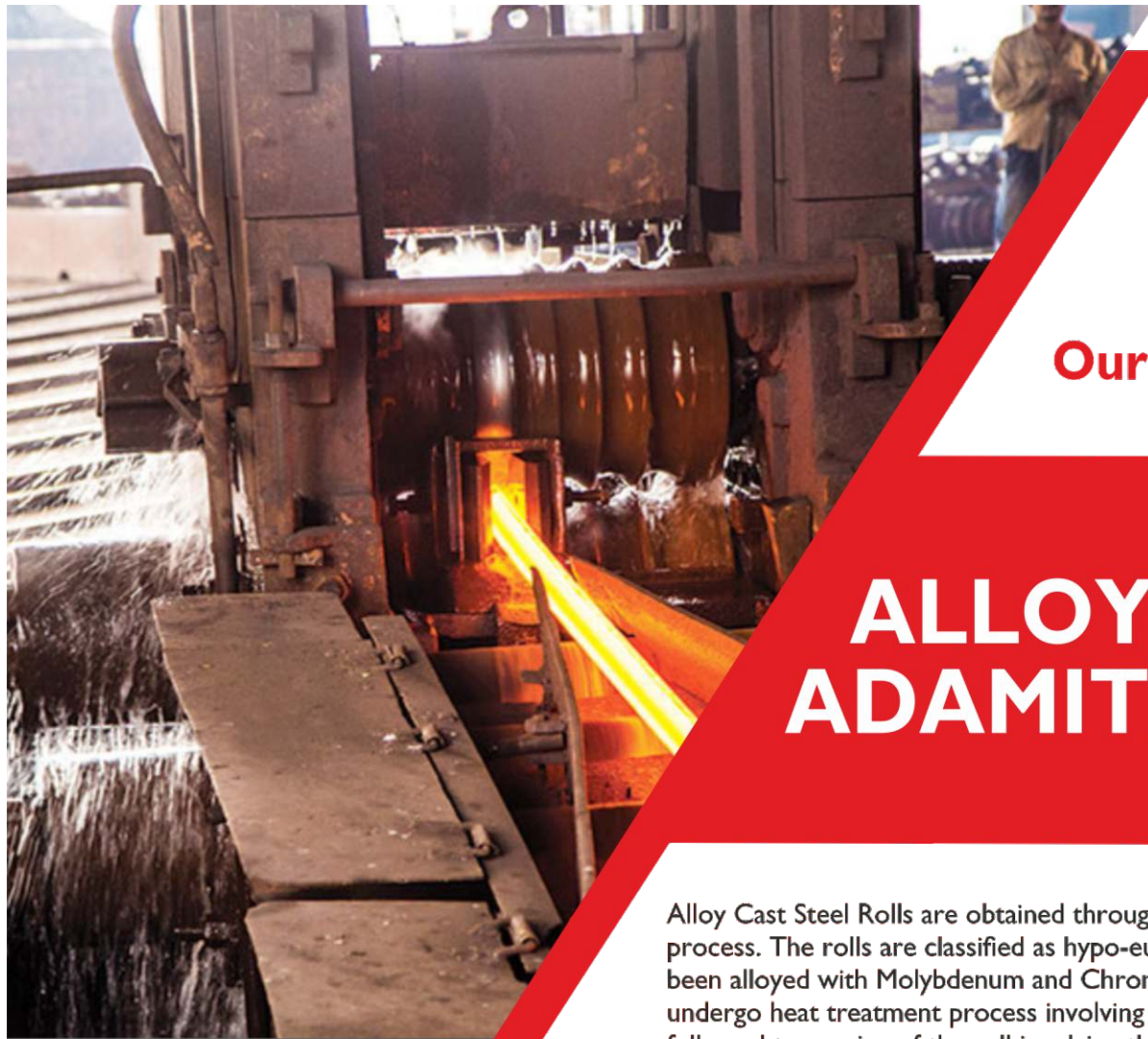
Roughing and intermediate rolls for slabbing and blooming mills. Roughing, intermediate and finishing for rail and structural mills. Finishing for wire rod and narrow strip mills.

**Best Rolls for
Tough Applications**



Chemical Composition

Material	Hardness (SH-D)	C%	Mn%	Si%	S%	P%	Cr%	Ni%	Mo%
S.G. (Pearlitic)	40-50	3.00-3.30	0.30-0.60	1.50-2.30	0.015 MAX	0.10 MAX	0.30 MAX	1.50-2.00	0.25-0.40
S.G. (Pearlitic)	50-60	3.00-3.30	0.30-0.60	1.50-2.30	0.015 MAX	0.10 MAX	0.40 MAX	1.50-2.00	0.25-0.40
S.G. (Pearlitic)	60-70	3.10-3.50	0.50-1.00	1.30-1.80	0.015 MAX	0.10 MAX	0.30-0.80	1.50-2.50	0.30-0.60
S.G. (Pearlitic)	70-75	3.10-3.50	0.50-1.00	1.30-1.80	0.015 MAX	0.10 MAX	0.30-0.80	1.50-2.50	0.30-0.60
S.G. (Acicular)	40-50	3.00-3.30	0.30-0.50	1.80-2.30	0.015 MAX	0.080 MAX	0.20 MAX	2.00-3.00	0.60-0.90
S.G. (Acicular)	50-60	3.00-3.30	0.30-0.50	1.80-2.30	0.015 MAX	0.080 MAX	0.50 MAX	2.00-3.00	0.70-1.00
S.G. (Acicular)	60-70	3.10-3.50	0.50-0.80	1.30-2.00	0.015 MAX	0.080 MAX	0.30-0.80	2.00-3.50	0.80-1.10
S.G. (Acicular)	70-80	3.10-3.50	0.50-0.80	1.30-2.00	0.015 MAX	0.080 MAX	0.30-0.80	2.50-4.50	0.80-1.10



We know the rolls you need!

Our Product Range

ALLOY STEEL ADAMITE ROLLS

Alloy Cast Steel Rolls are obtained through a process of statically cast iron process. The rolls are classified as hypo-eutectoid steel rolls, which have been alloyed with Molybdenum and Chromium. The rolls are made to undergo heat treatment process involving double annealing. The process is followed tempering of the roll involving thermal shock resistance and toughness testing. The micro structure of Alloy Cast Steel Rolls is mainly pearlitic having broken cementite. The rolls are known for good weldability and offer high degree mechanical strength.

All Type of ROLLS FOR
**HOT IRON &
STEEL ROLLING
& RE ROLLING MILLS**

Applications:

- These Rolls are suitable for rolling medium and heavy sections. These rolls are also used for roughing stands of



Chemical Composition

Hardness	C%	Mn%	Si%	Cr%	Ni%	Mo%	S%	P%
40-45	1.20-1.40	0.60-0.90	0.30-0.60	0.80-1.00	0.60 MAX	0.25-0.35	0.05 MAX	0.05 MAX
45-50	1.40-1.60	0.60-0.90	0.30-0.60	1.00-1.20	0.60 MAX	0.30-0.40	0.05 MAX	0.05 MAX
50-55	1.50-1.90	0.60-0.90	0.30-0.60	1.10-1.30	0.80-1.40	0.35-0.50	0.05 MAX	0.05 MAX



We know the rolls you need!

Our Product Range

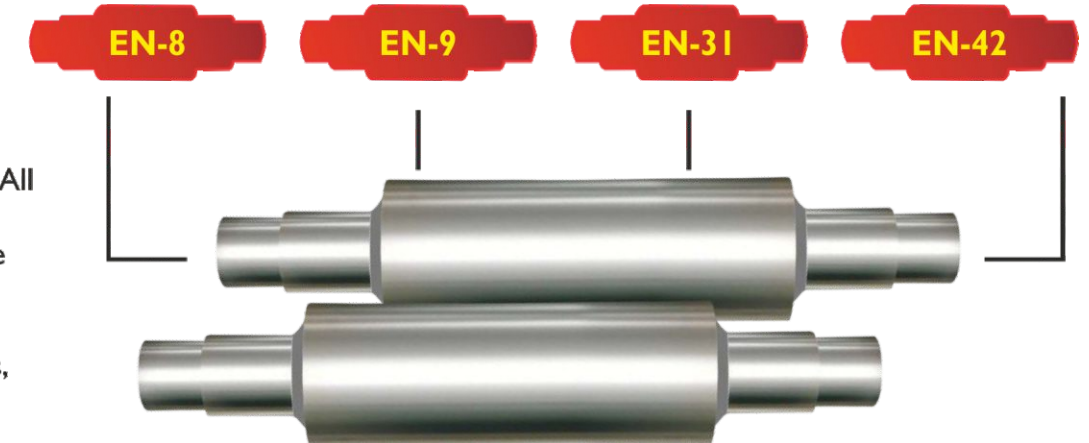
FORGED ROLLS

Forging wherein the material is hammered according to the customers sizes & requirements, is a process in which the ingot is heated in the furnace & then forged. The forging process help in cohesiveness and strength by elongation of the grain structure, which results in material having much higher load bearing capacities as compare to casted material. Thus these rolls being so superior in wear resistance to that of Cast Steel Rolls are specially adapted for roughing and intermediate plate mills and rod or bar mill rougher.

All Type of ROLLS FOR
**HOT IRON &
STEEL ROLLING
& RE ROLLING MILLS**

Applications:

- These Rolls are suitable for All Grade Forged Cylinders, Forged Automobile & Crane Parts, Roughing Stand Forged Rolls, Forged Rolls for Stainless Steel Mills, Forged Roll for Hot Steel



Chemical Composition

Grade	C%	Mn%	Si%	S%	P%	Cr%	Ni%	Mo%
EN-8	0.35-0.45	0.60-1.00	0.10-0.35	0.02 MAX	0.02 MAX	-	-	-
EN-9	0.50-0.60	0.50-0.80	0.05-0.35	0.02 MAX	0.02 MAX	-	-	-
EN-42	0.70-0.85	0.55-0.75	0.10-0.40	0.02 MAX	0.02 MAX	-	-	-
EN-31	0.9-1.2	0.30-0.75	0.10-0.35	0.02 MAX	0.02 MAX	1.0-1.6		

Inspection & Testing Facilities



We know the rolls you need!

Roll quality is monitored closely through spectrographic chemical analysis, micro structure analysis, hardness analysis, apart from ultrasonic testing, mechanical strength testing and dimensional control. The company is equipped with necessary instruments required for these control measures.

As such We are fully equipped to provide satisfactory reports to our customer for all kinds of tensile strength, yield stress, elongation and shore hardness of the material.

- **Fully equipped wet analysis lab**
- **Digital Microscopic Laboratory**
 - Segregation
 - Internal soundness
 - Surface defects
 - Micro structural analysis
 - Inclusion rating
 - Grain growth and dendrite study of the ingot
 - Grain size
- **Spectrometers (32 channels)**
- **D.P. Testing Facility**
- **Sand Testing Equipment**
- **Digital Immersion Pyrometer**
- **Shore Hardness Testing Machines**
- **Magnetic Particle Inspection**
- **Impact Testing**



We Always Believe in Quality

Packaging Facilities

Our packaging lines are well-structured to ensure that our products are packed neatly as per customer specifications. We have a well equipped packaging department, where we pack our products in a manner which keeps the products highly safe. Thus the main importance is given to the safe delivery of the product, so that the final product delivered to the client is the same as we dispatched. We believe in using high-quality packaging materials and a systematic process. This enables us to achieve long-lasting and safe packaging of our products.



Global Presence

Distribution Network

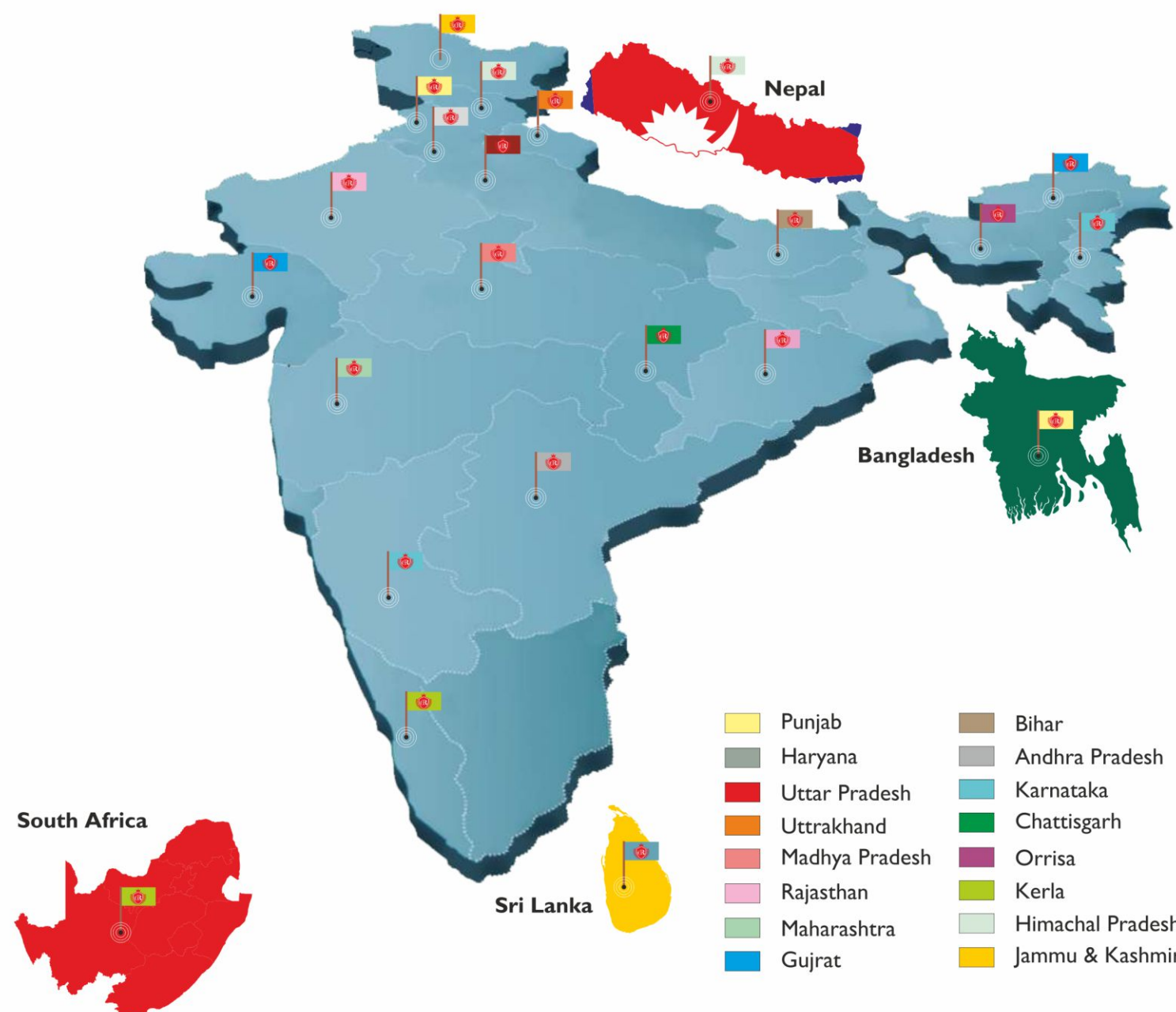


We know the rolls you need!

Shree Gautam Rolls also act as one of the biggest exporter of all type of Rolls for Hot Iron & Steel Rolling & re Rolling Mills in domestic as well as overseas market. Our products provide flawless performance which is cost effective as well as reliable. The company is observing & maintaining international standards of quality with regard to all aspects of manufacturing & packaging. In India we have more than 150 satisfied customers.

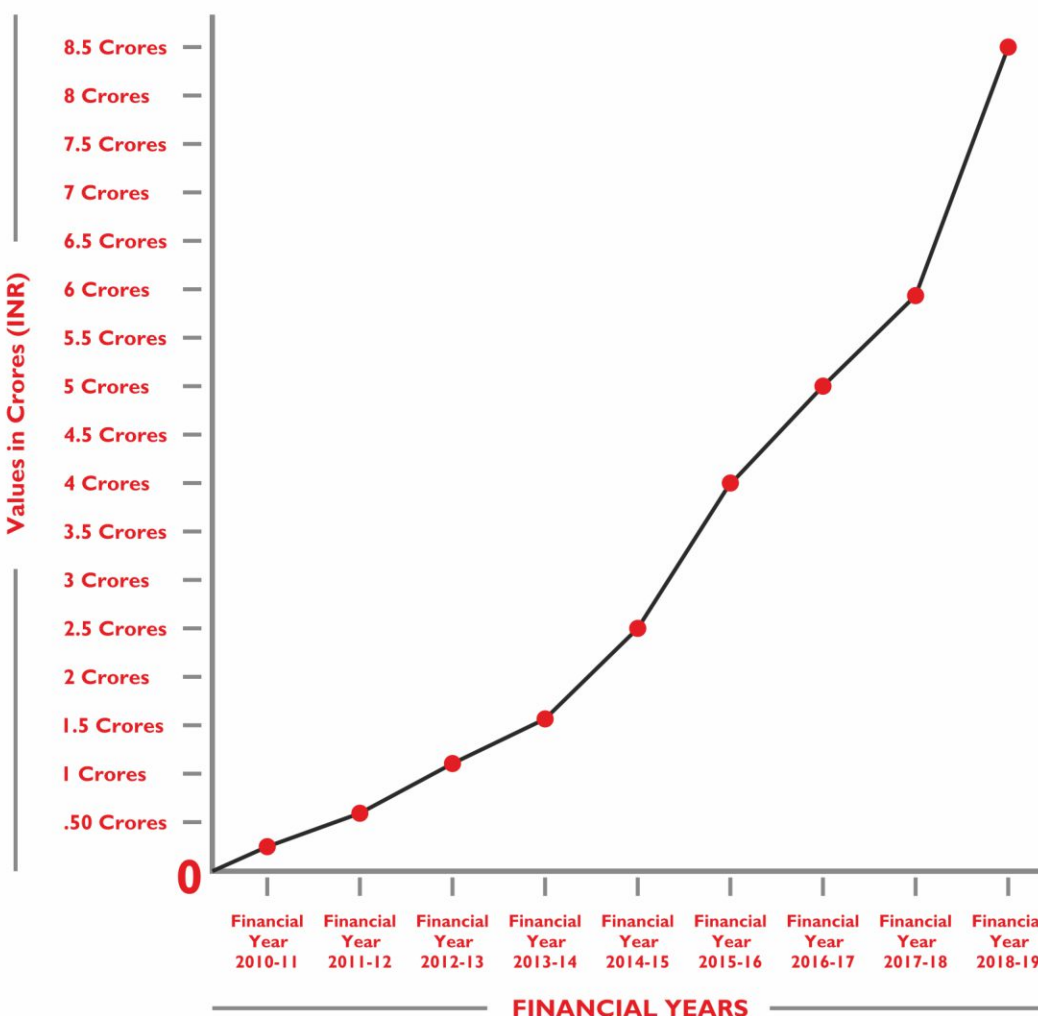
In Domestic Market: Andhra Pradesh, Assam, Gujrat, Haryana, Himachal Pradesh, Mizoram, Jammu & Kashmir, Karnataka, Kerala, Madhya Pradesh, Meghalaya, Maharashtra, Punjab, Tamilnadu, Uttrakhand, Uttar Pradesh, West Bengal, Telangana, NCR, Etc.

In Foreign Market: Nepal, Bangladesh, Sri Lanka, South Africa, Etc.



Sales Growth

Growth Performance Year by Year



“Always
Delivered
more
than
Expected”



**A satisfied customer is
the best business strategy
for GROWTH.**

Thank You

For Your Precious Time



Shree Gautam Rolls is very thankful to you for your precious time to go through this company profile catalogue, with a request to give us a chance to serve you by placing orders of rolls for your reputed concern. We are fully geared to customize our services to suit your requirements. We greatly value your Trust & Confidence and sincerely appreciate your loyalty to our business.

It's a pleasure doing business with you.
I am wishing all of us success.

Thank You

